

INTERNATIONAL PIPE

JUST ARRIVED

CALL FOR FOOTAGE & PRICING • **800-716-7473**

2" - 36"



36 X .438

STRAIGHT SEAM, USED, FBE,
MIXED ENDS, 1-3 MW

MORE 26 X .312

ERW, USED, BARE/BLK RESIDUE,
BXB, 0-1 MW

20 X .500

A252 GR 2/3, BARE, DOM,
BXB, MTRS

6 5/8 X .188

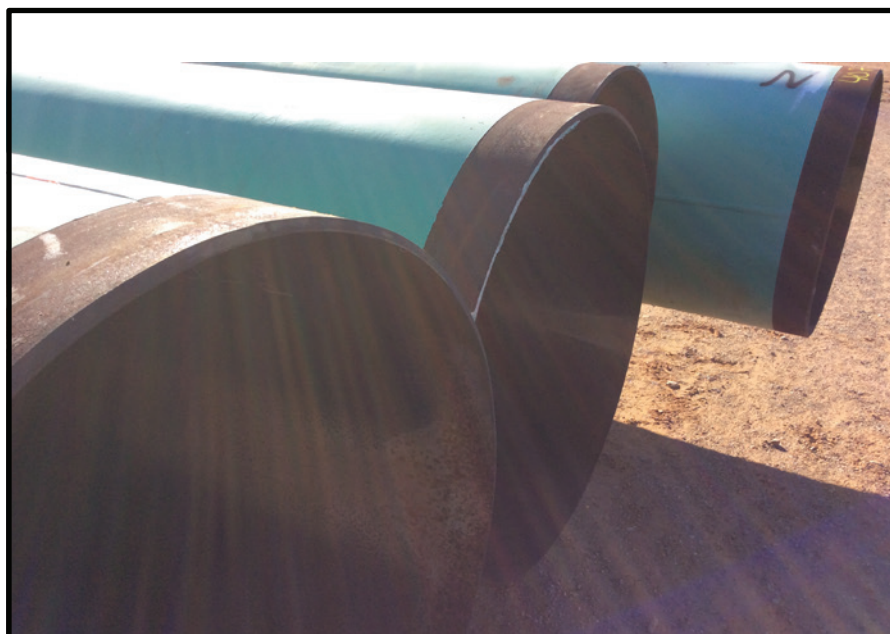
ERW API 5L X52, SURPLUS,
FBE, BXB

4 1/2

10.5# -11.6# STRUCTURAL,
USED, BARE, TUBING, T&C

2 3/8 X .190

X 31.5' USED T&C



INTERNATIONALPIPE.COM

